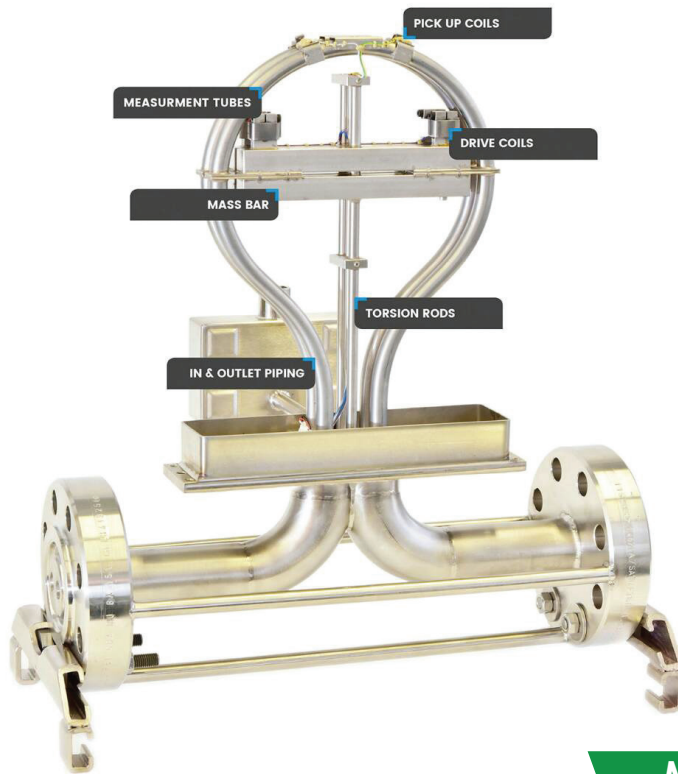




Rockwin Flowmeter
India Pvt Ltd

The World's Most Versatile Range of **Coriolis Mass Flowmeter**





ROCKWIN is exclusive distributor in India for Rheonik Messtechnik GmbH, Germany for Coriolis Mass Flowmeter; these flow meters make use of Coriolis force principle for measurement of mass flow of liquids and gases. Its unique omega tube element and cross bar / torsion bar construction enables its high degree of accuracy remaining unaffected by pipeline vibrations and pressure changes. A range of Electronic readout units for panel and field mountings are available. Applications include Petroleum products, Pharmaceuticals, LPG, LNG, CNG, Food and beverages, Pulp etc.

Meter Range Overview

Full Scale Meters up to 30000 kg / min (66140 lbs / min)

RHM60 to RHM160

- 4" to 12" line sizes
- Perfect for material movements in small and wide scale operations

Mid range meters up to 1500 kg / min (3400 lbs / min)

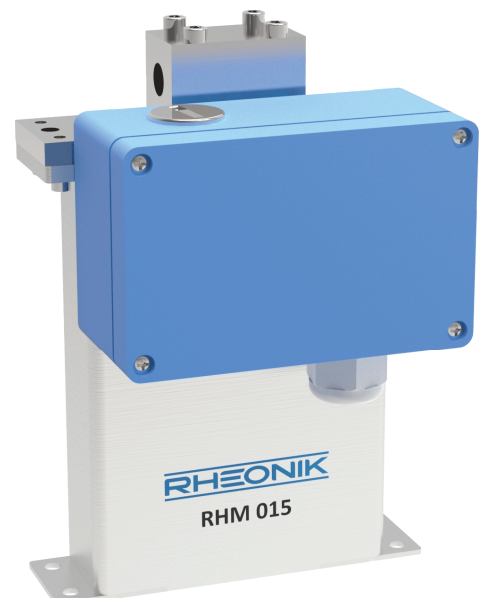
RHM12 to RHM40

- 1" to 1" line sizes
- Suited to industrial and process flow control and monitoring

Small sizes up to 50 kg / min (110 lbs / min)

RHM015 to RHM08

- 1/4" to 1" line sizes
- Small footprint - ideal for embedded systems and precise small flow applications



Technical Specifications

Line Size	1/4" to 12"
Flow Range	0.004 kg / min to 30000 kg / min
Density Range	Up to 5000 kg / m ³
Process Connection	ANSI/DIN Flange/GRAYLOK® HUB/FEMALE THREAD/SWAGELOK® FITTING/ TRICLAMP/DIN 11851 SANITARY/MP AUTOCLAVE
Material Availability	1.4571 (316Ti) (std.)/ 1.4539(904L)/ Sandvik HP160/2.4602 (Alloy C22)/ 1.4462 (Duplex) / 1.4410 (Super Duplex)/ Tantalum/Custom Materials to Customer Specification

Mass Flow Calibration Options

A	Calibration optimized for wide flow range use - 0.5% uncertainty across a flow range of 50:1 from Qmax
B	Calibration optimized for higher flow rate use - 0.2% uncertainty across a flow range of 20:1 from Qmax
C	Low flow calibration - 0.2% uncertainty across a flow range of 1:20 from Qmin
G	Goldline higher accuracy calibration - 0.12% (0.15%)* uncertainty across a flow range of 20:1 from Qmax
P	Goldline high accuracy calibration - 0.10% (0.12%)* uncertainty across a flow range of 10:1 from Qmax
1	Low flow optimized calibration - 0.2% uncertainty across a flow range of 1:20 plus 0.6% uncertainty across a flow range of 2.5:1 around Qmin

Uncertainties stated are percentage of reading. Some meter models will have slightly different turndown ranges - see specific model literature for details. Uncertainty chart is applicable to liquid applications only. Gas application uncertainty may vary depending upon pressure and velocity. *Depending upon meter size.

Transmitter Range

TRANSMITTER MODEL	RHE07	RHE08	RHE11	RHE12	RHE16
Mounting	19" rack/panel	Field	Field	Field	DIN rail
Housing type	DIN Cassette	Aluminium	Stainless Steel	Aluminium	Plastic
Housing Rating	IP 20	IP 65	IP66	IP 66	IP 20
PARAMETER AVAILABILITY					
Mass Flow	s	s	s	s	s
Volumetric Flow	s	s	s		o
Density	s	s	s		o
Temperature	s	s	s	s	s
Process Specific Functions	Gain, Gas Nm3, etc. See individual data sheets for more details.				
SUPPLY VOLTAGE					
230 VAC	o	o	o		
115 VAC	o	o	o		
24 VDC	o	o	o	s	s
INPUTS/OUTPUTS					
4-20 mA	2	2	1-2	1	1
Pulse/Frequency	1	1	1	1	2
Digital/Status Out	3	3	o		2
Digital/Control In	2	2	o		
DIGITAL INTERFACES					
RS 485 / ASCII	o	o	o		
RS 422 / ASCII	o	o			
RS 232 / ASCII	o	o			
HART		o	o	s	
Modbus					s
EX APPROVALS					
ATEX approval Ex II (1) G [Ex ia Ga] IIC	o	o			
ATEX approval Ex II 2(1) G Ex db eb [ia Ga] IIC T5			s		
ATEX approval Ex II 2(1) G Ex db [ia Ga] IIC T6				o	
ATEX rating Ex II 3 G Ex nA IIC T4 Gc	o	o			o
CSA Cl.1, Div.1, Gr.B, C, D	o	o		o	

s = standard
o = selectable

Rockwin, an ISO 9001 : 2008 company, has been successfully designing, manufacturing, calibrating and marketing high quality flow meters and related equipment for oil and gas, chemical and fertilizers, pharmaceutical, power, steel, defence and other major industries since 1976.

Rockwin's certifications include

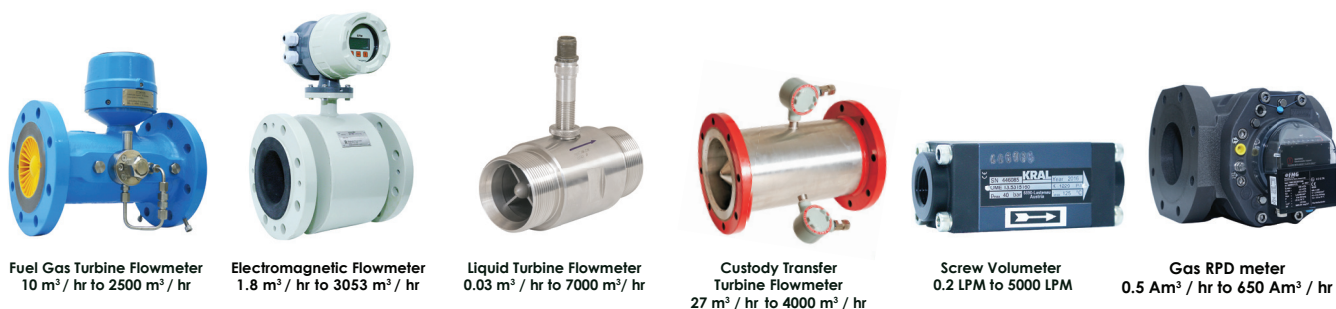
- ISO 9001
- PED (Directive 97/23/EC) Module H
- NABL accreditation to ISO / IEC 17025
- ATEX

Rockwin In House Calibration Lab



Rockwin's Calibration Facilities are accredited by NABL(National Accreditation Board for Testing and Calibration Laboratories) and in accordance with ISO / IEC 17025.

Other Flowmeters From Rockwin



Development dictates that from time to time the data shown above is subject to change without notice. Please obtain a quotation.

Head Office & Works

B-24, Site IV, Sahibabad
Industrial Area,
Ghaziabad,
Uttar Pradesh 201010.
Tel: 0120 - 4538230,
2895401
Fax: 0120 - 2895450

info@rockwin.com

Kolkata Office

Oriental House, Suite
GC, 6C, Elgin Road,
Kolkata 700020.
Tel: 033 - 22809774,
22809775
Fax: 033 - 22809774

kolkata@rockwin.com



we measure up
www.rockwin.com

Mumbai Office

402, Terminal 9 Building,
Nehru Road Extension,
Vile Parle (East)
Mumbai 400099.
Tel: 022 - 26146274,
26175008
Fax: 022 - 26118131

mumbai@rockwin.com

Chennai Office

85/19, Sri Rangam
Avenue, Pantheon
Road, Egmore
Chennai 600008.
Tel: 044 - 28529176
Fax: 044 - 28529569

chennai@rockwin.com